

吸汗速乾ニット

# ドットクール

DOT COOL

## <BF-4520>

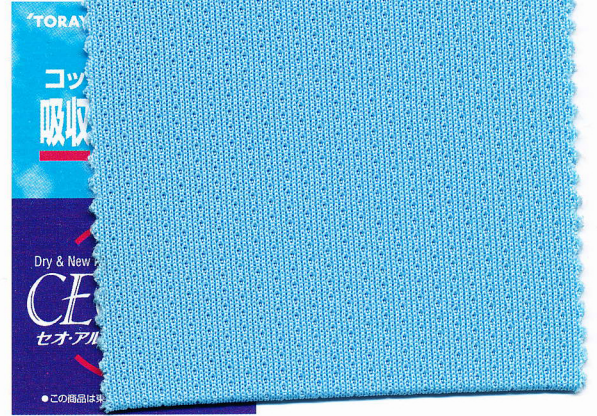
MADE IN JAPAN

- 規格 170cm×40m
- 素材 ポリエステル 100%

### 取扱い方法



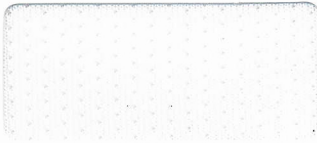
Quality Sample



製造・発売元 マスダ株式会社

K12 (TX4)

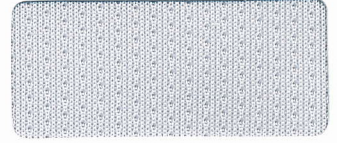
TB-1



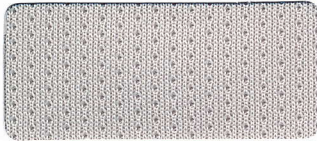
TB-7



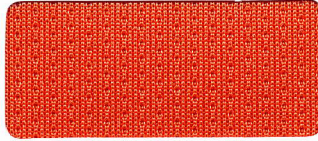
TB-21



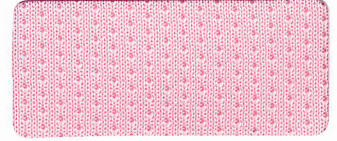
TB-2



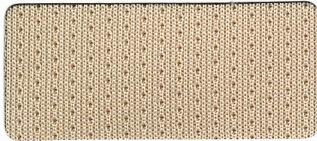
TB-8



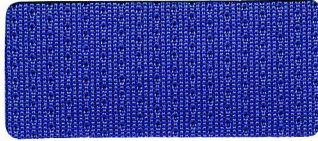
TB-22



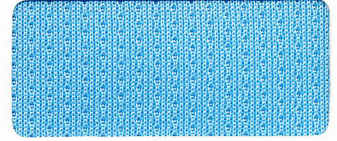
TB-3



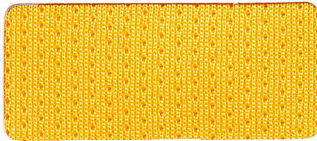
TB-9



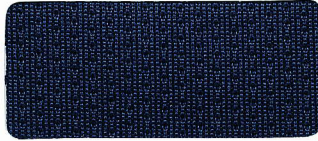
TB-23



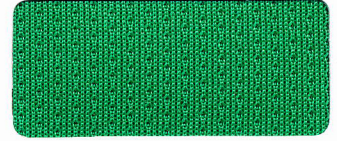
TB-4



TB-10



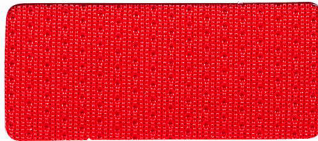
TB-24



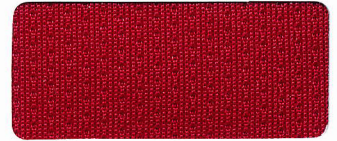
TB-5



TB-11



TB-25



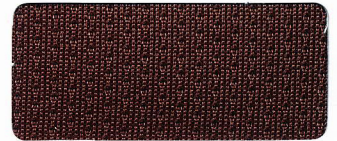
TB-6



TB-12



TB-26



### ■#使用素材の特長

- ◆ セオ<sup>®</sup>アルファ (専用ラベル有り)  
(CEO<sup>®</sup> α)

この商品は、東レが開発した特殊技術により、糸の内部に汗を取り込み、毛細管現象の働きで、吸水・速乾させる高機能商品です。

※方向性がありますので裁断・縫製等ご注意願います。